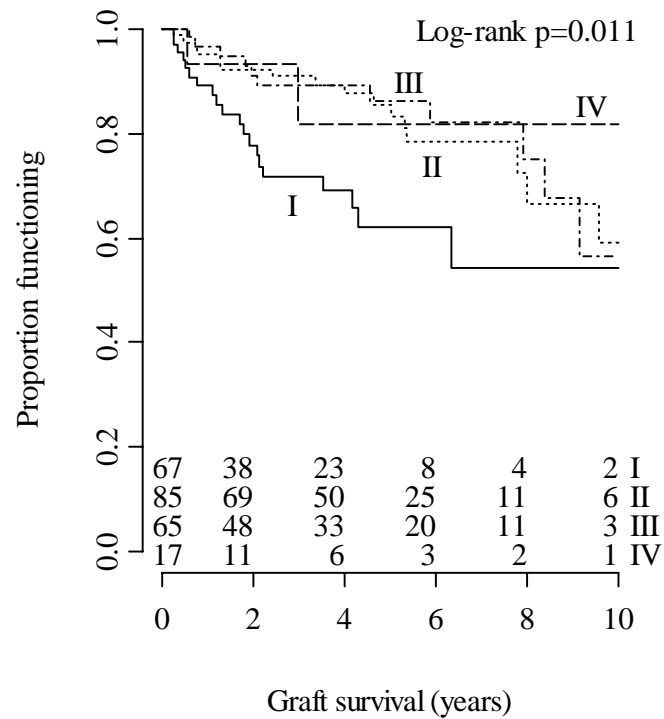


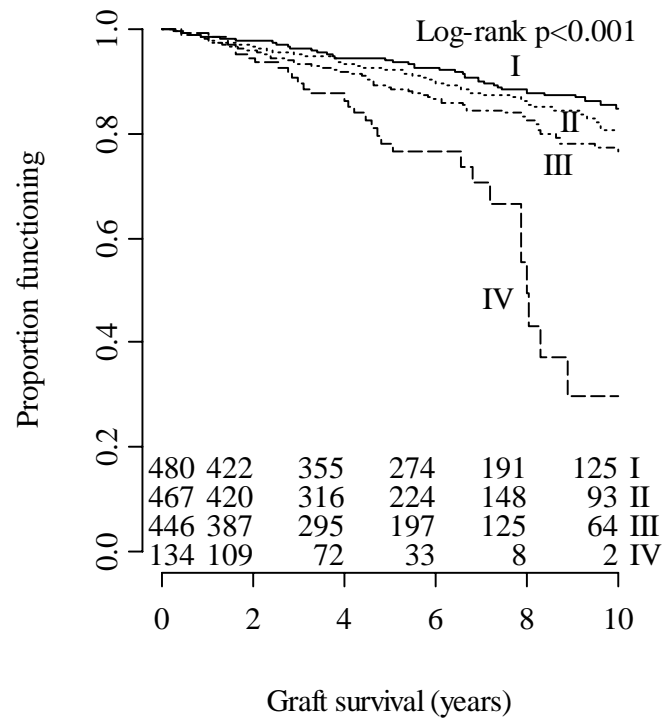
Functional graft survival (N=1829, 275 events):

Kaplan-Meier analysis

CNI-:

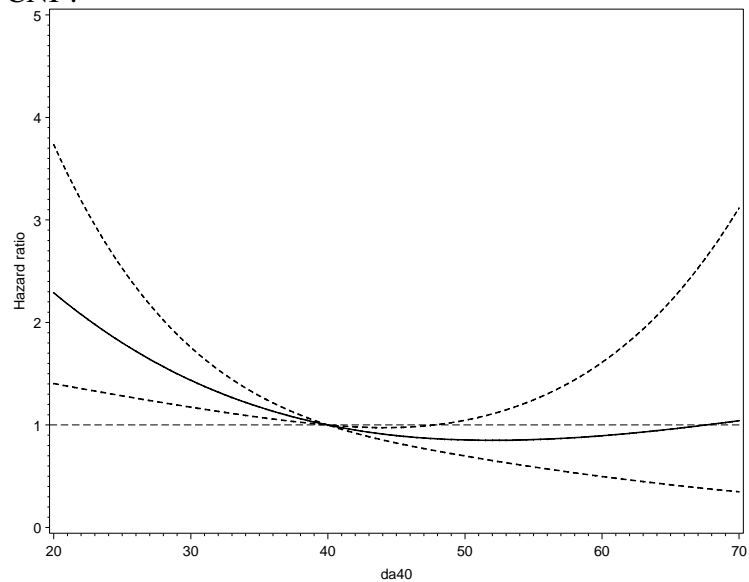


CNI+:

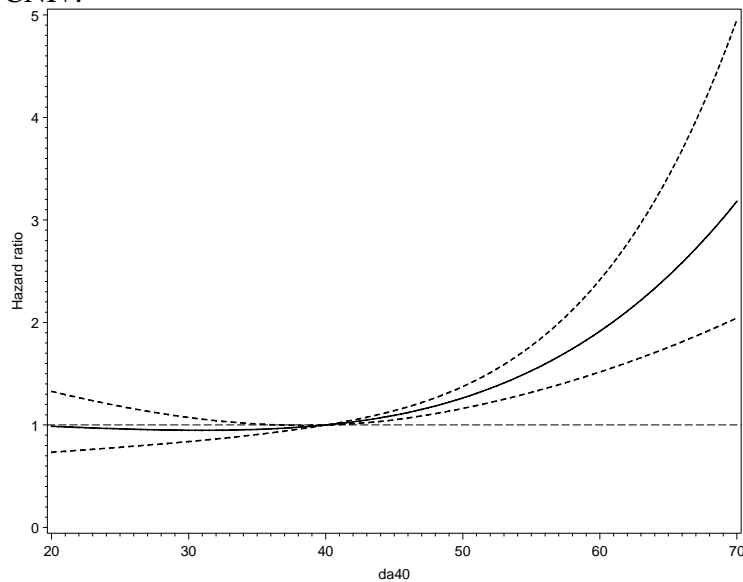


Crude hazard ratios

CNI-:



CNI+:

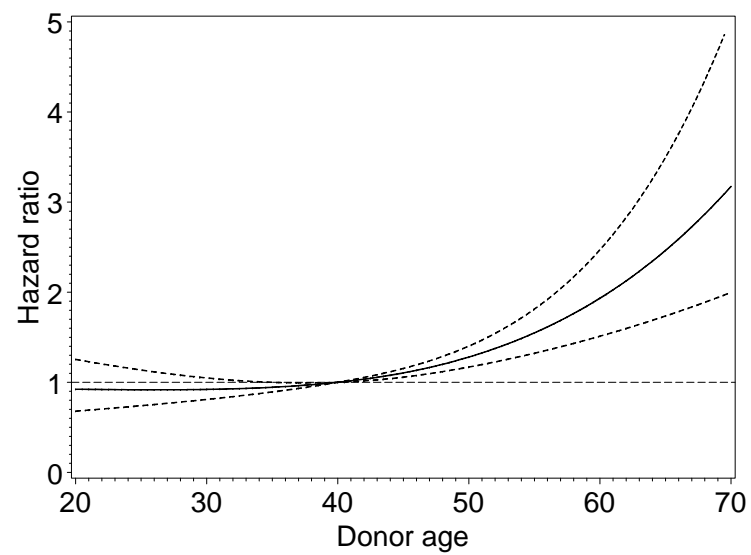
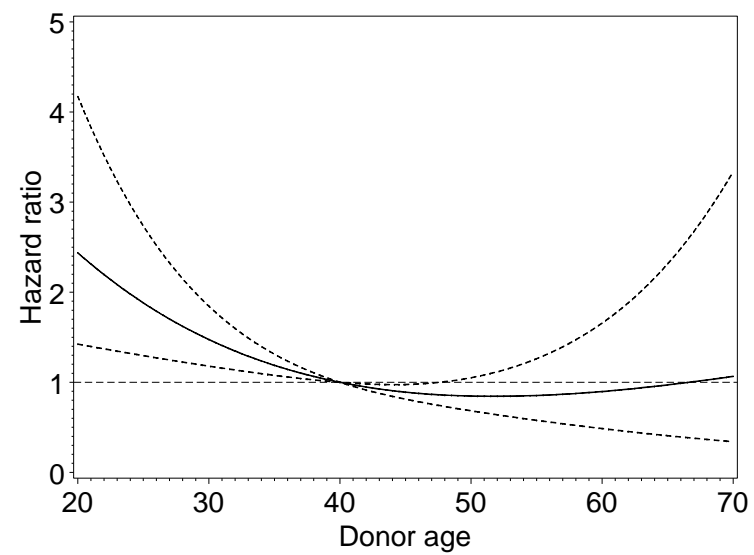


Parameter	Hazard Ratio	Lower 95% CL HR	Upper 95% CL HR	Pr > t
immg90	1.68594	0.40100	7.0882	0.4759
noCA_DA1	2.88222	0.67372	12.3304	0.1535
noCA_DA2	1.19366	0.27271	5.2247	0.8142
noCA_DA3	1.05552	0.23249	4.7922	0.9442
CA_DA1	0.26098	0.16701	0.4078	<.0001
CA_DA2	0.33392	0.21452	0.5198	<.0001
CA_DA3	0.43637	0.28420	0.6700	0.0002

Adjusted:

CNI- (model only including PRA, Cholest, vascid1, vascid2):

CNI+:



Full model, excluding mediators (DGF, BCAR, Crea90):

Parameter	Hazard Ratio	Lower	Upper	Pr > t
		95% CL HR	95% CL HR	
immg90	1.96121	0.45945	8.3717	0.3630
noCA_DA1	2.55125	0.58836	11.0628	0.2108
noCA_DA2	1.19185	0.26950	5.2709	0.8170
noCA_DA3	1.10716	0.24115	5.0831	0.8958
CA_DA1	0.21642	0.13490	0.3472	<.0001
CA_DA2	0.30443	0.19069	0.4860	<.0001
CA_DA3	0.41014	0.26242	0.6410	<.0001
age_tpl10	0.91483	0.83606	1.0010	0.0526
khk	1.11466	0.75798	1.6392	0.5709
cmp	1.14628	0.75221	1.7468	0.5153
vascid1	1.01794	0.57905	1.7895	0.9475
vascid2	1.02326	0.56312	1.8594	0.9334
year_tpl	0.93911	0.90015	0.9798	0.0039
dialysezeit	1.03174	0.97148	1.0957	0.3087
cholest10	0.99135	0.96998	1.0132	0.4217
map10	1.00949	0.98252	1.0372	0.4860
diabetes	1.53479	1.10026	2.1409	0.0119
cad	0.70532	0.42048	1.1831	0.1859
mmsum	1.03981	0.93414	1.1574	0.4724
pra_g	1.01405	0.79477	1.2938	0.9104

Model including mediators (but excluding pra and vascid to avoid overfit):

Parameter	Hazard Ratio	Lower 95% CL HR	Upper 95% CL HR	Pr > t
immg90	1.93114	0.45173	8.2556	0.3746
noCA_DA1	2.61591	0.59968	11.4111	0.2007
noCA_DA2	1.27693	0.28761	5.6693	0.7479
noCA_DA3	1.10929	0.24076	5.1111	0.8941
CA_DA1	0.23825	0.14392	0.3944	<.0001
CA_DA2	0.32628	0.20178	0.5276	<.0001
CA_DA3	0.43112	0.27575	0.6740	0.0002
age_tp110	0.90987	0.83134	0.9958	0.0403
khk	1.20094	0.84458	1.7077	0.3059
cmp	1.13308	0.76324	1.6821	0.5338
year_tpl	0.93747	0.90098	0.9754	0.0014
dialysezeit	1.02675	0.96877	1.0882	0.3734
cholest10	0.98893	0.97125	1.0069	0.2260
map10	1.01061	0.98685	1.0349	0.3840
diabetes	1.51738	1.11788	2.0596	0.0075
cad	0.71383	0.42556	1.1974	0.2014
mmsum	1.04787	0.94152	1.1662	0.3911
dgf	1.12384	0.81650	1.5469	0.4737
bcar1	1.01927	0.78511	1.3233	0.8860
logcreat90	1.04654	0.91067	1.2027	0.5212

Different parametrization

Parameter	Hazard Ratio	Lower 95% CL HR	Upper 95% CL HR	Pr > t
donorage1	2.68180	0.60426	11.9023	0.1945
donorage2	1.22322	0.27225	5.4959	0.7927
donorage3	1.12500	0.24091	5.2535	0.8809
IS_DA1	0.16197	0.09430	0.2782	<.000
IS_DA2	0.49847	0.28685	0.8662	0.0135
IS_DA3	0.73789	0.38609	1.4102	0.3577
IS_DA4	1.92740	0.44610	8.3274	0.3795
age_tpl10	0.91541	0.83777	1.0003	0.0507
khk	1.03328	0.68435	1.5601	0.8751
cmp	1.15916	0.75879	1.7708	0.4918
vascid1	1.18146	0.71552	1.9508	0.5103
vascid2	1.07421	0.72268	1.5967	0.7218
year_tpl	0.93898	0.90257	0.9768	0.0018
dialysezeit	1.02895	0.96921	1.0924	0.3497
cholest10	0.98977	0.97207	1.0078	0.2639
map10	1.00968	0.98576	1.0342	0.4307
diabetes	1.52363	1.10851	2.0942	0.0095
cad	0.72774	0.43330	1.2223	0.2296
mmsum	1.03642	0.93550	1.1482	0.4935
pra_g	0.98966	0.77660	1.2612	0.9330

Assessing interactions with log(time)

Interactions with log(_time_)		
		False Discovery Rate
var1	raw_p	p-value
	.	.
immg90	0.80969	0.97256
noCA_DA1	0.24155	0.97256
noCA_DA2	0.31315	0.97256
noCA_DA3	0.83475	0.97256
CA_DA1	0.78065	0.97256
CA_DA2	0.35711	0.97256
CA_DA3	0.96421	0.97256
age_tpl10	0.91200	0.97256
khk	0.97256	0.97256
cmp	0.83961	0.97256
vascid1	0.35761	0.97256
vascid2	0.80058	0.97256
year_tpl	0.52556	0.97256
dialyzezeit	0.83934	0.97256
cholest10	0.44533	0.97256
map10	0.66232	0.97256
diabetes	0.21767	0.97256
cad	0.88663	0.97256
mmsum	0.56503	0.97256
pra_g	0.66494	0.97256

Interactions with Donorage-IS

variable	with_variable	Pr > Chi-Square	DF	False Discovery Rate p-value
age_tpl	immg90 noC...	0.1131	7	0.2941
khk	immg90 noC...	0.3506	7	0.4558
cmp	immg90 noC...	0.2066	7	0.3905
vascid1	immg90 noC...	0.3424	7	0.4558
vascid2	immg90 noC...	0.9714	7	0.9714
dialysezeit	immg90 noC...	0.2103	7	0.3905
year_tpl	immg90 noC...	0.0613	7	0.1991
cholest	immg90 noC...	0.0510	7	0.1991
map	immg90 noC...	0.7015	7	0.7599
diabetes	immg90 noC...	0.5699	7	0.6735
cad	immg90 noC...	0.2543	7	0.4133
mmsum	immg90 noC...	0.0108	7	0.1086
pra_g	immg90 noC...	0.0167	7	0.1086