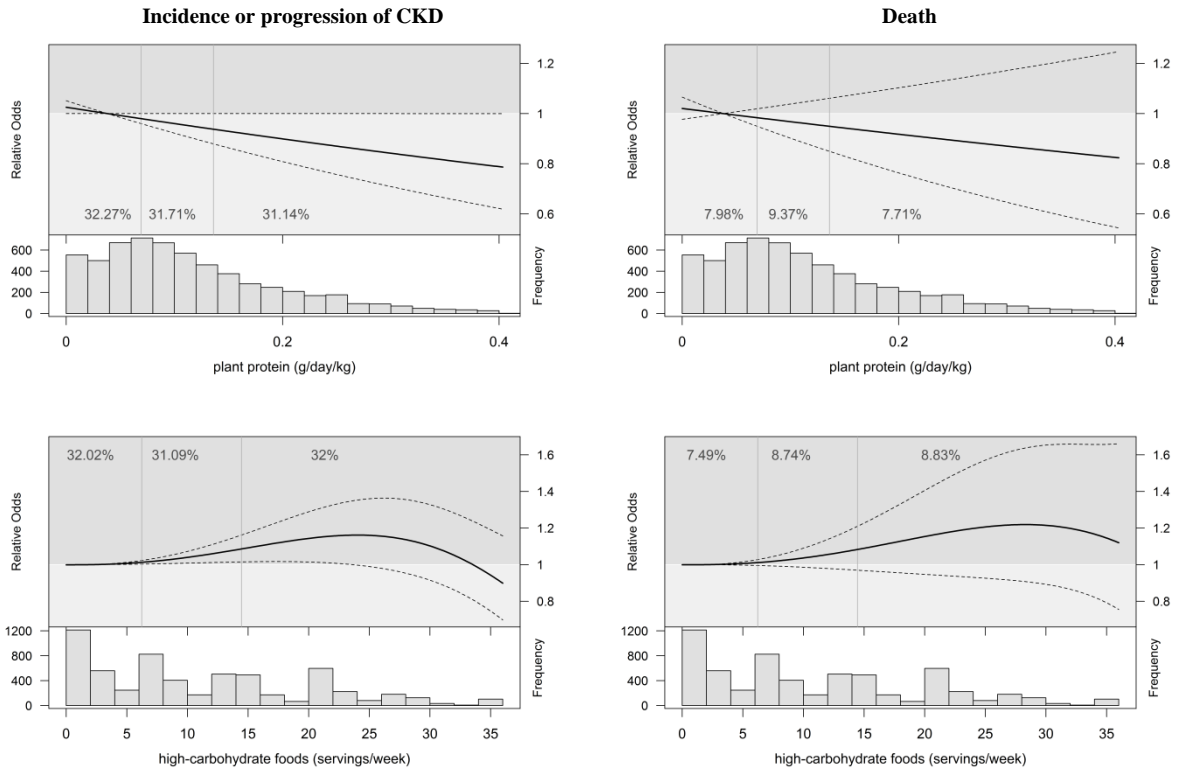


eFigure 3. Multivariable model adjusted with known confounders.



Association of plant proteins (g/kg/d) and high-carbohydrate foods (servings/week) and relative odds with 95% CI for incidence or progression of CKD (left) or death (right) and respective histograms. The gray vertical lines show tertiles and the numbers within each tertile give the percentage of participants experiencing the respective event. For confounders see eTable 7. The remaining independent variables are depicted in the manuscript in Figure 3.