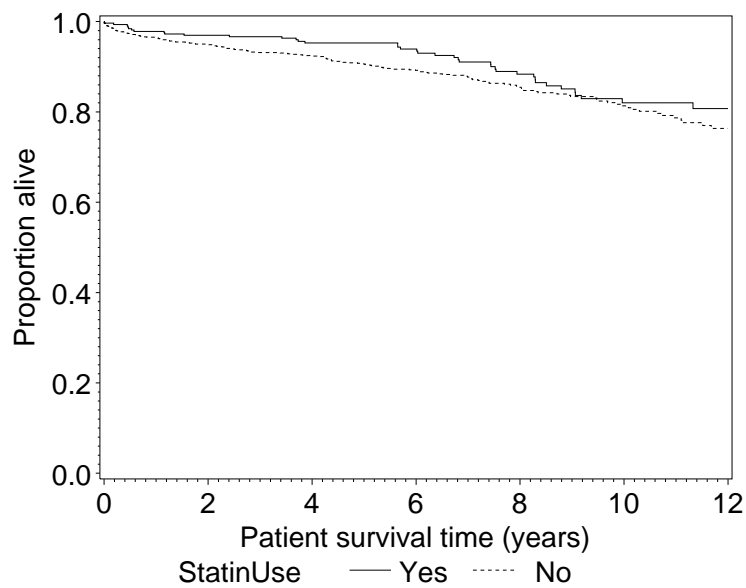


11. Cardiovascular death outcome

Among the 2041 patients, 223 died with confirmed cardiovascular causes. 35 of these 223 deaths occurred before day 90. Extended Kaplan-Meier plot stratified for (time-dependent) statin use:

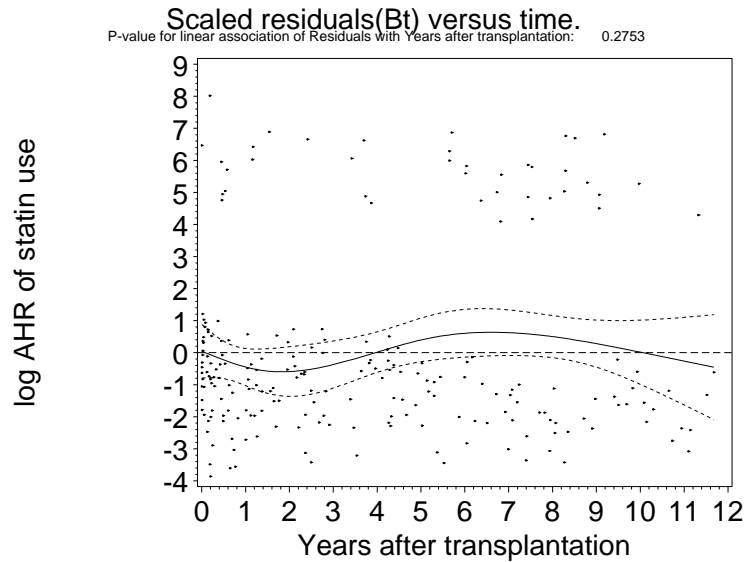


The confounder adjusted hazard ratios (MSM analysis and multivariable Cox regression; counting only cardiovascular causes; 223 events of 2041 patients) were:

Type of analysis	Hazard ratio	Lower 95% limit HR	Upper 95% limit HR	Pr > t
MSM analysis (adjusting for informative censoring due to death of other causes and graft loss)	0.591	0.344	1.014	0.067
Cox regression analysis (not adjusting for informative censoring)	0.802	0.565	1.139	0.217

The results from MSM analysis are very similar to those from all-cause mortality. Cox regression analysis, which does not account for informative censoring (death from other than cardiovascular causes) yields a higher hazard ratio.

Scaled Schoenfeld residuals of statin use versus time:



The Schoenfeld residuals plot and the extended Kaplan-Meier curves (section 13) show a more pronounced effect during the first years after transplantation, and a reverse situation thereafter. Summarizing the whole follow-up period into one hazard ratio results in a value of about 0.85 (counting cardiovascular deaths from day 90 as events) or 0.77 (counting all cardiovascular deaths as events).