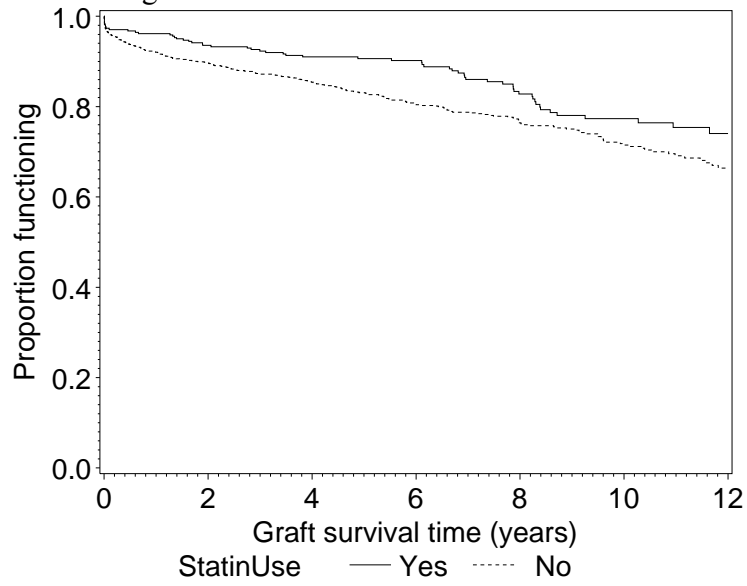


Functional graft survival



Results from marginal structural models

outcome	Hazard ratio	Lower 95% limit HR	Upper 95% limit HR	Pr > t
Patient survival	0.66	0.49	0.90	0.009
Actual graft survival	0.75	0.61	0.93	0.008
Functional graft survival	0.88	0.65	1.20	0.420