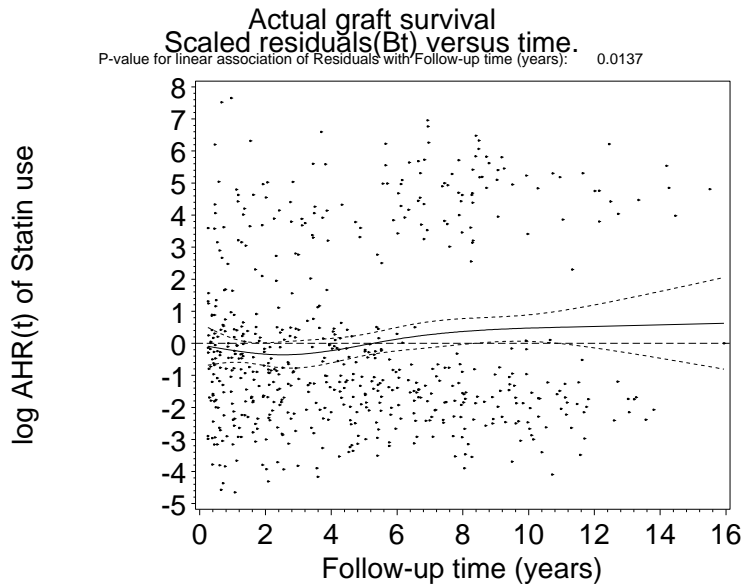
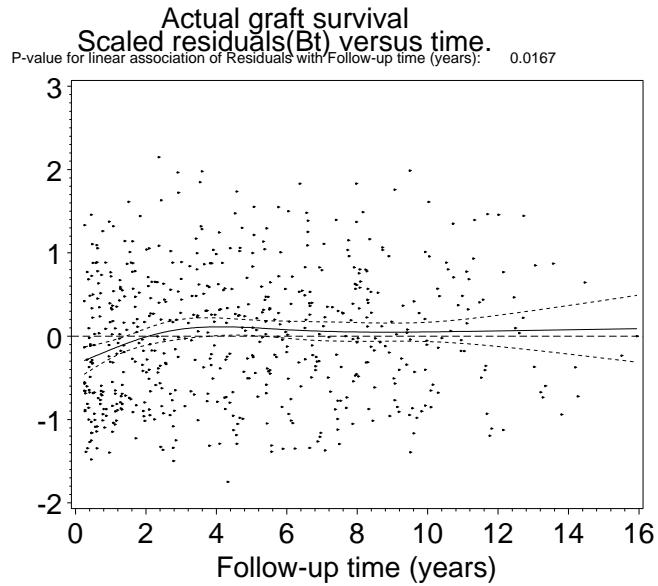


Scaled Schoenfeld residuals were plotted against time for the variables: statin use, number of bloodpressure lowering drugs and hb (hemoglobin).Schoenfeld residuals of Statin use:



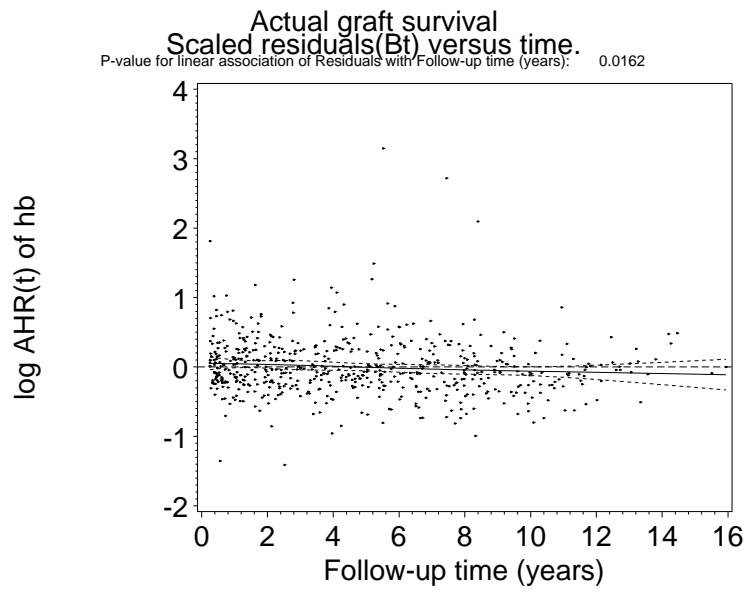
Comment: the plot shows a more pronounced effect during the first four years, and a reverse effect after 7 years of follow-up (exploratory finding because of non-significance of violation of ph assumption)

Schoenfeld residuals of number of bloodpressure lowering drugs:



Comment: the plot shows a protective effect of the number of blood pressure drugs during the first two years, and the reverse afterwards. Adjusting for this time-dependency by including an interaction with  $\log(\text{time})$  did not change the hazard ratio of statin use.

Schoenfeld residuals of hb:



Comment: Higher hb levels are associated with better outcome only after about four years.