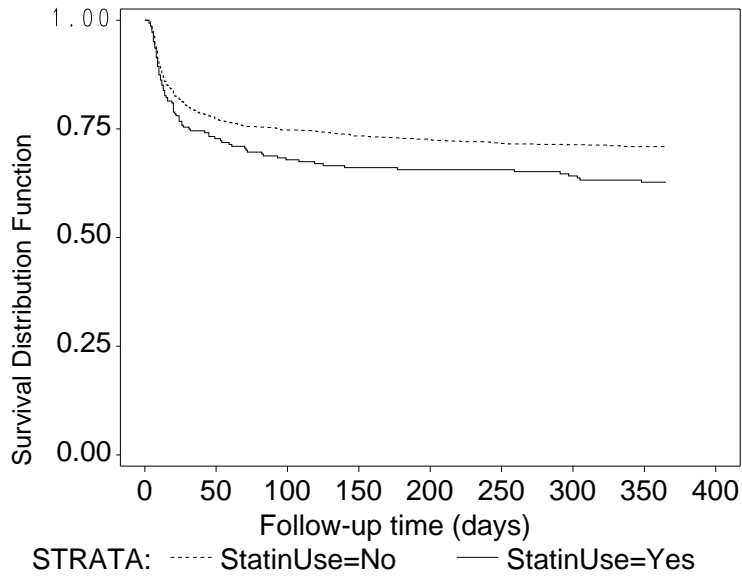


13. Analysis of time to (biopsy confirmed) acute rejection

Results from Kaplan-Meier analysis and Cox regression. Dependent variable: BCAR up to one year after transplantation.



Crude hazard ratio:

Variable	Hazard Ratio	95% Lower Confidence Limit for Hazard Ratio	95% Upper Confidence Limit for Hazard Ratio	Pr > Chi-Square
Statin use	1.33	1.06	1.66	0.0138

Multivariable Cox model:

Variable (measured at TPL)	Hazard Ratio	95% Lower Confidence Limit for Hazard Ratio	95% Upper Confidence Limit for Hazard Ratio	Pr > Chi-Square
Statin use	0.91	0.70	1.17	0.4551
Cholesterol level	1.01	1.00	1.01	0.0038
(Cholesterol/100) ²	0.85	0.75	0.95	0.0039
No of blood pressure drugs	1.07	1.00	1.13	0.0440
Coronary heart diseasr	1.02	0.89	1.18	0.7604
Cardiomyopathy	1.08	0.93	1.26	0.3068
Cerebrovascular disease	1.06	0.89	1.25	0.5208
Peripheral arterial disease	1.11	0.96	1.29	0.1711
Time on dialysis	1.04	1.00	1.09	0.0452
diabetes	1.29	1.04	1.61	0.0235
Age at tpl	1.00	0.99	1.00	0.1633
Year of tpl	1.08	1.05	1.11	<.0001
HB	0.92	0.67	1.27	0.6160
MAP	1.00	1.00	1.01	0.0074
IS: others vs. S+MMF+CSA	1.24	0.97	1.60	0.0899
IS: S+AZA+CSA vs. S+MMF+CSA	2.30	1.69	3.14	<.0001
IS: S-free vs. S+MMF+CSA	1.25	0.75	2.08	0.3915
(HB/10) ²	0.81	0.17	3.89	0.7974
(MAP/100) ²	0.93	0.86	1.00	0.0457

Proportion of patients with biopsy-confirmed chronic allograft injury (formally CAN):

	Nr. of pts. (Statin/No Statin)	Statins	No Statins	p-value
Biopsy confirmed acute rejection (%)	2007 (302/1705)	105 (34.8%)	536 (31.4%)	0.25
Chronic allograft injury (%)	2041 (302/1739)	42 (13.9%)	219 (12.6%)	0.53