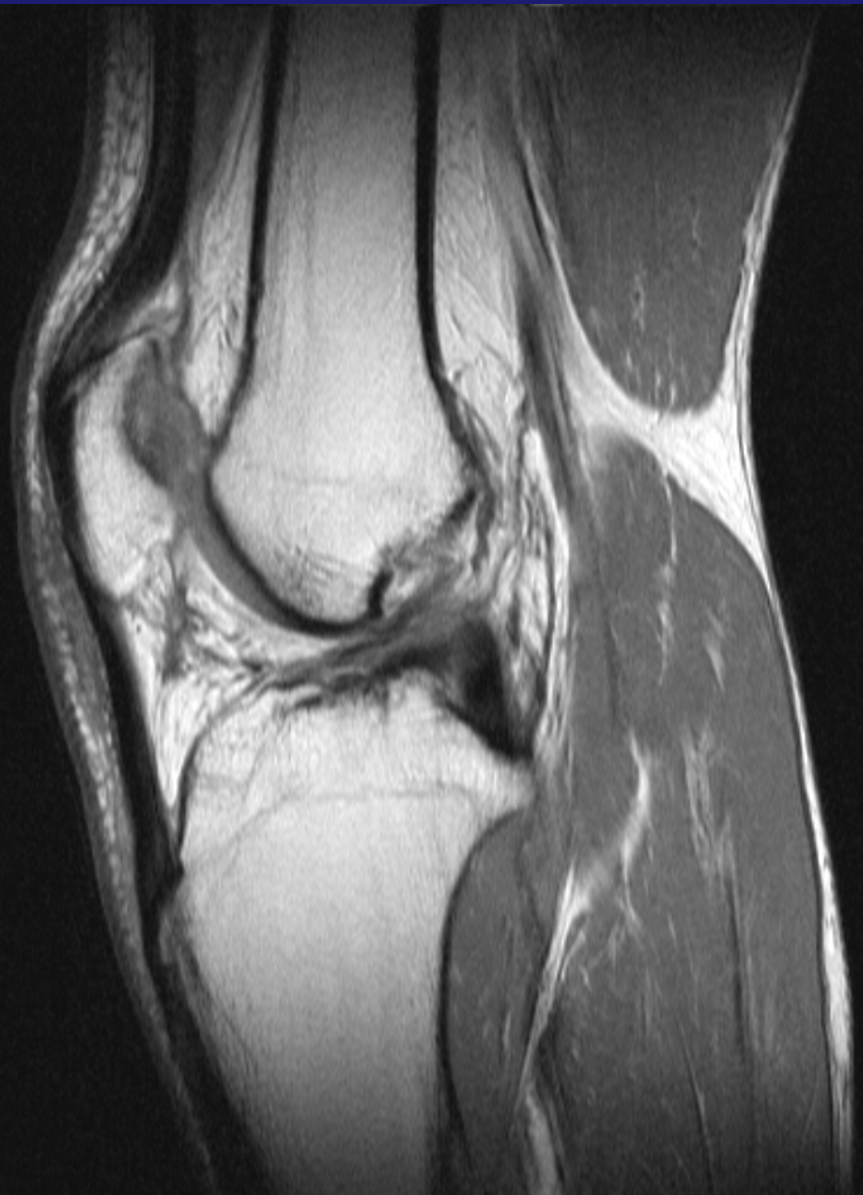


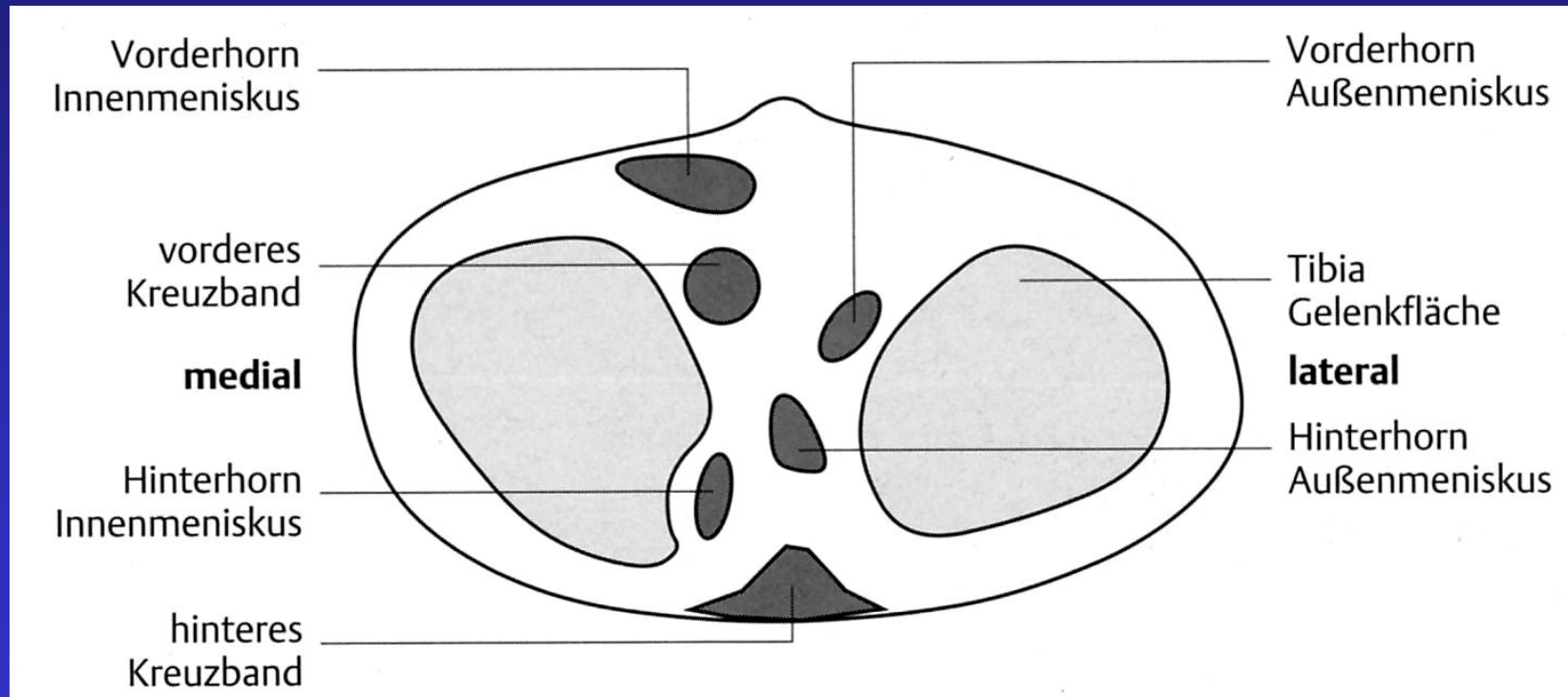
KNIEGELENK
**Bänder – Entzündung-
Überlastung**

Christian Krestan

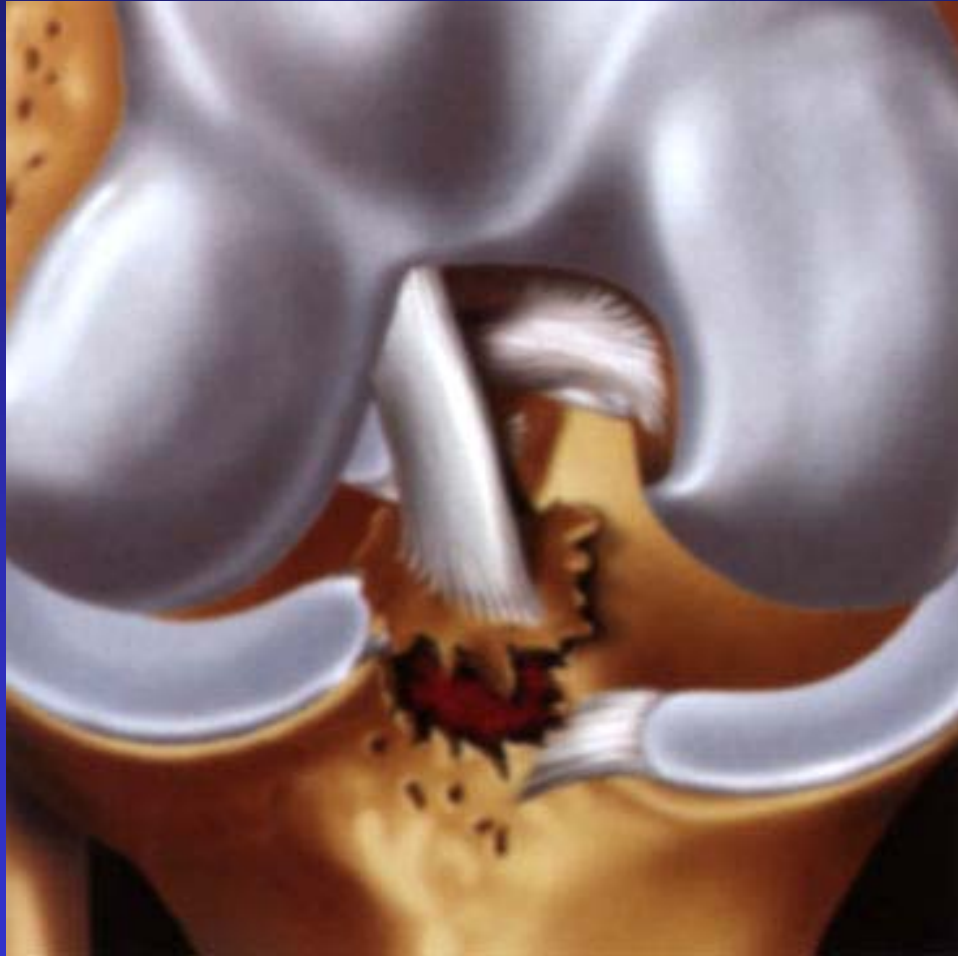




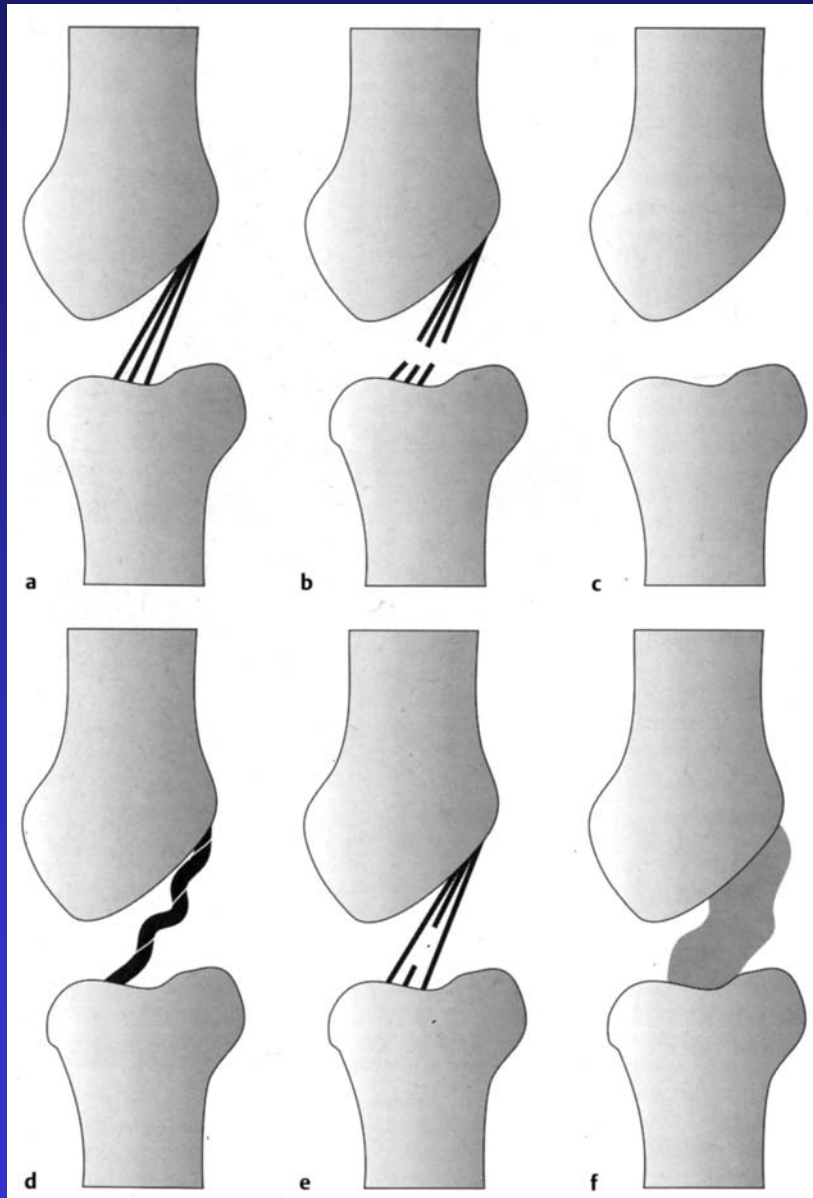
Anatomie



Avulsionsfraktur



Vorderes Kreuzband



A: Normal

**B: Kontinuitäts
Unterbrechung**

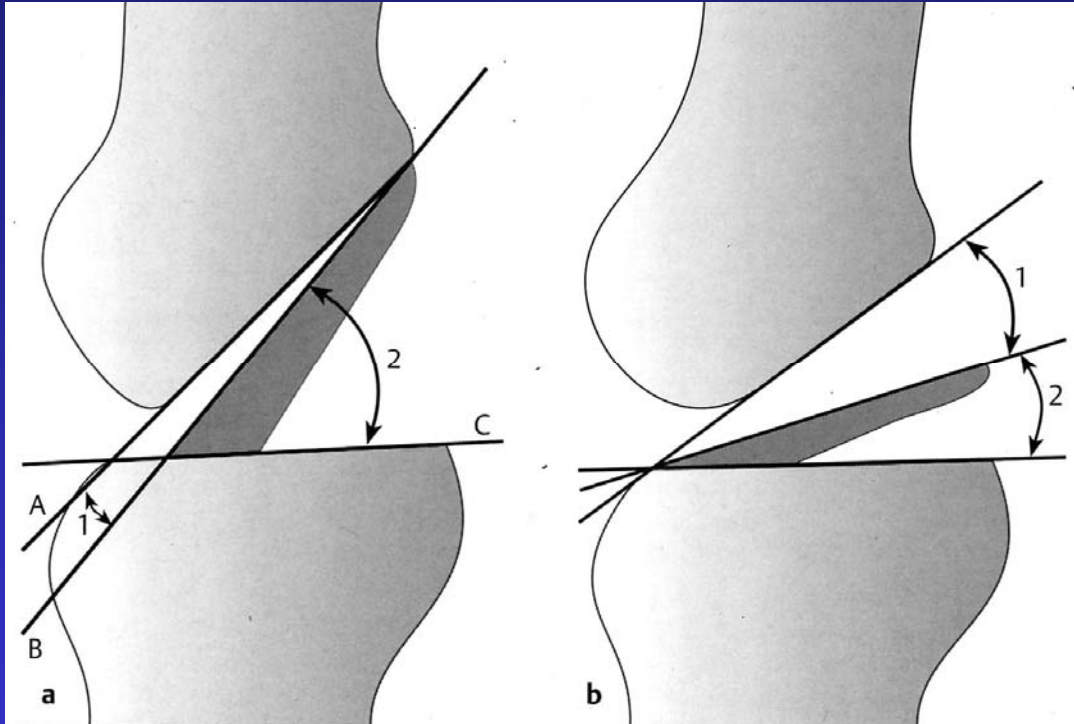
C: Fehlende Darstellung

D: Wellig, Signalerhöhung

E: Fokale Signalerhöhung

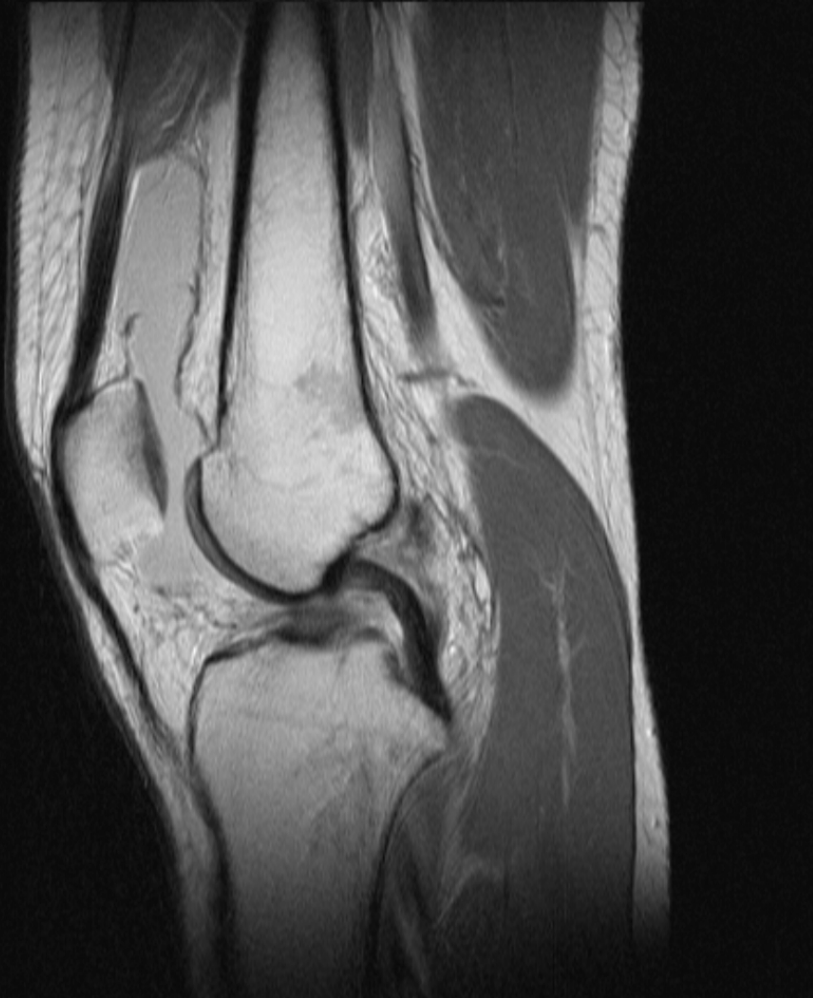
F: Auftreibung und diffuse SI ↑

Vordere Kreuzbandruptur

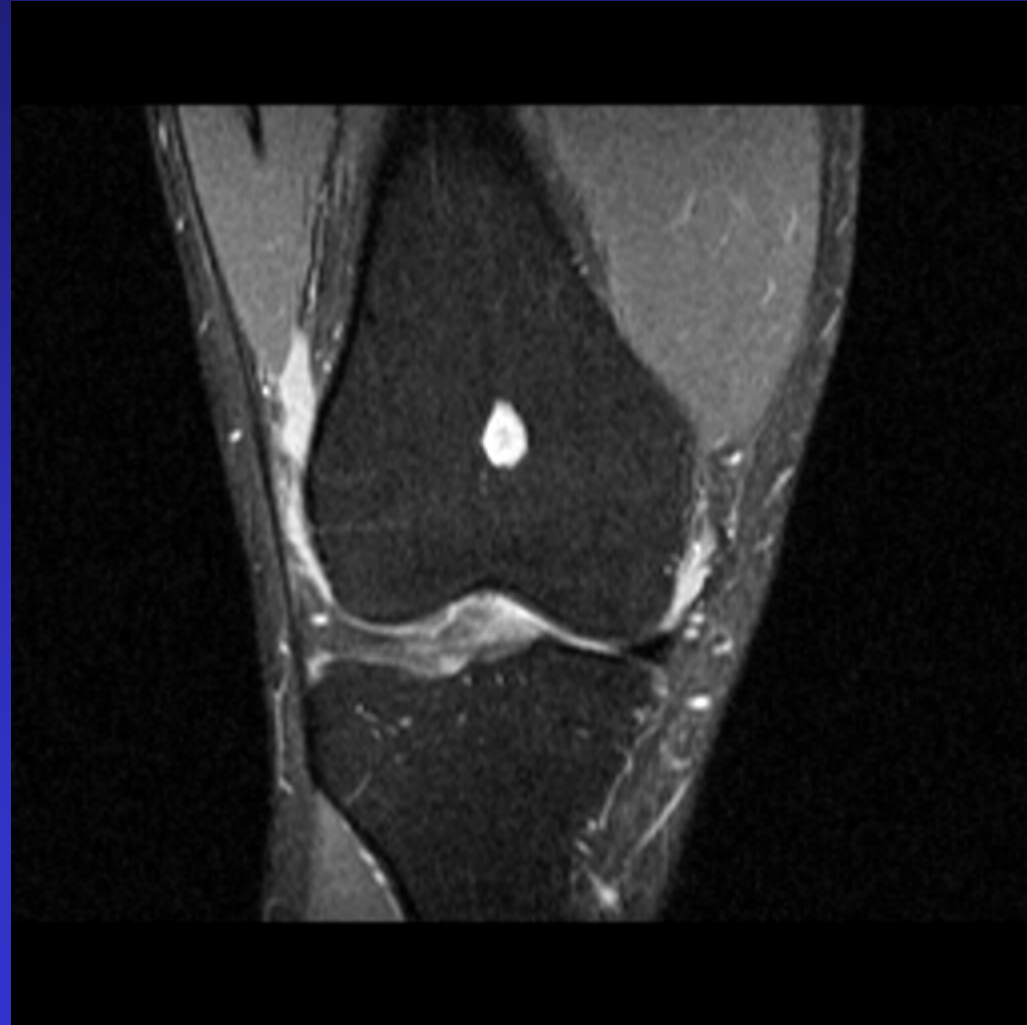


Winkel reduziert

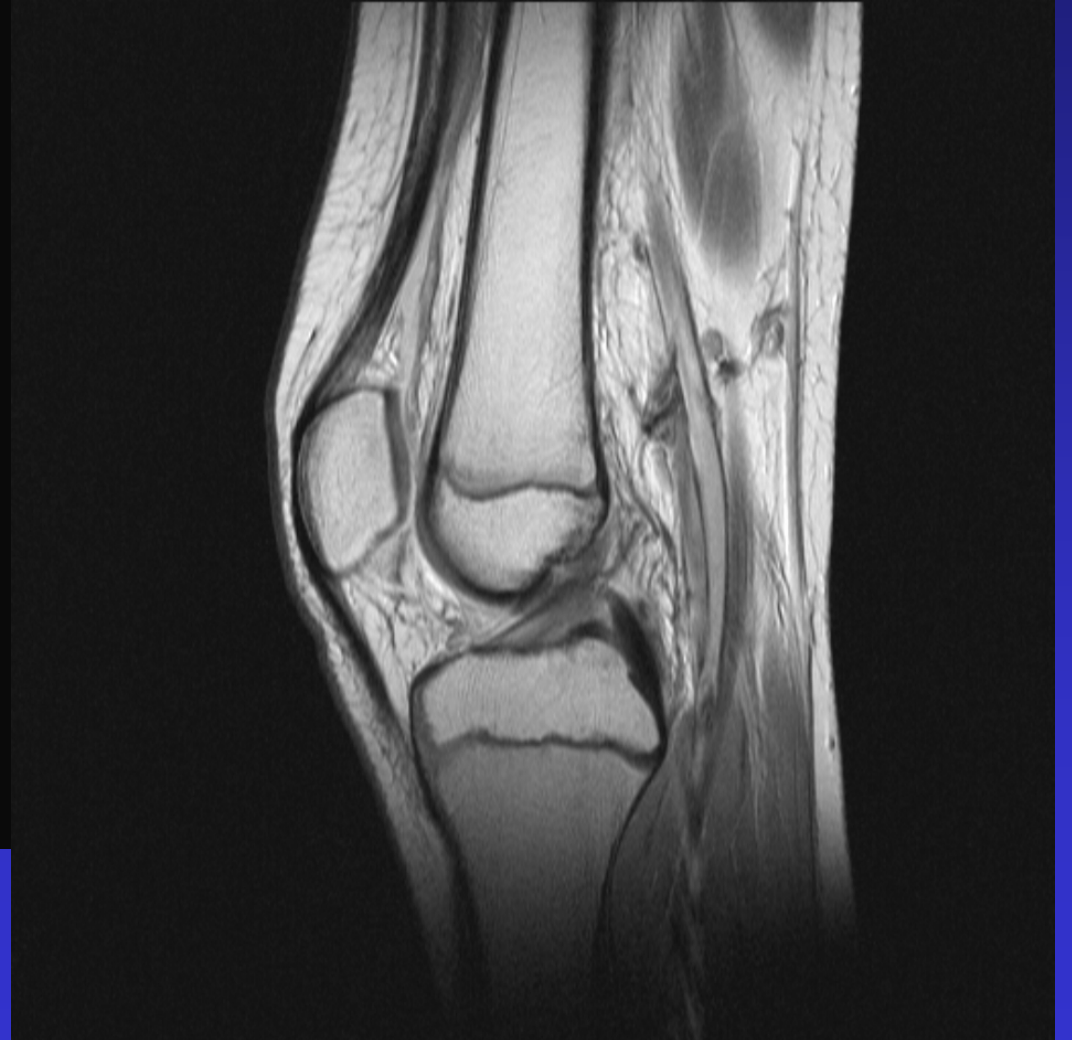
VKB-Ruptur



VKB Part.rupt.



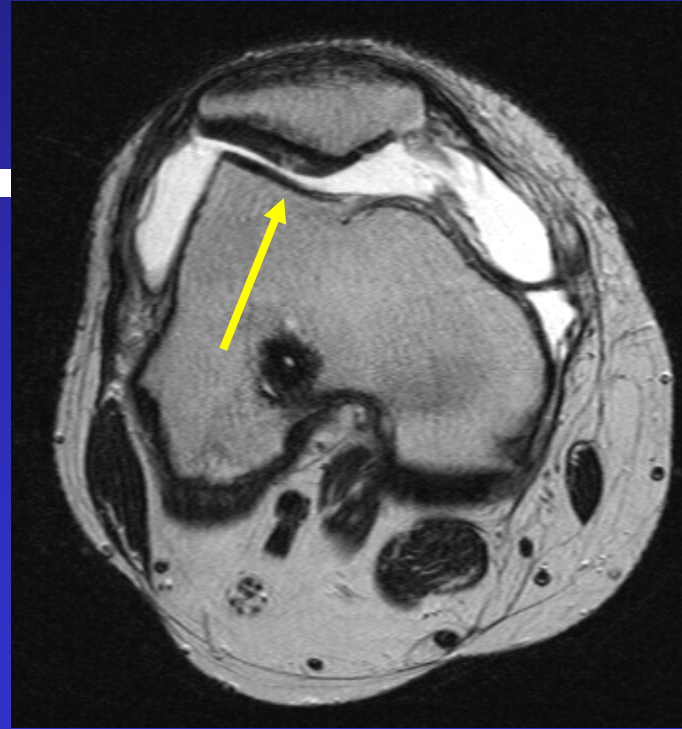
Z.n.VKB (part)



Zystisch.mukoid VKB



Z.n.VKB



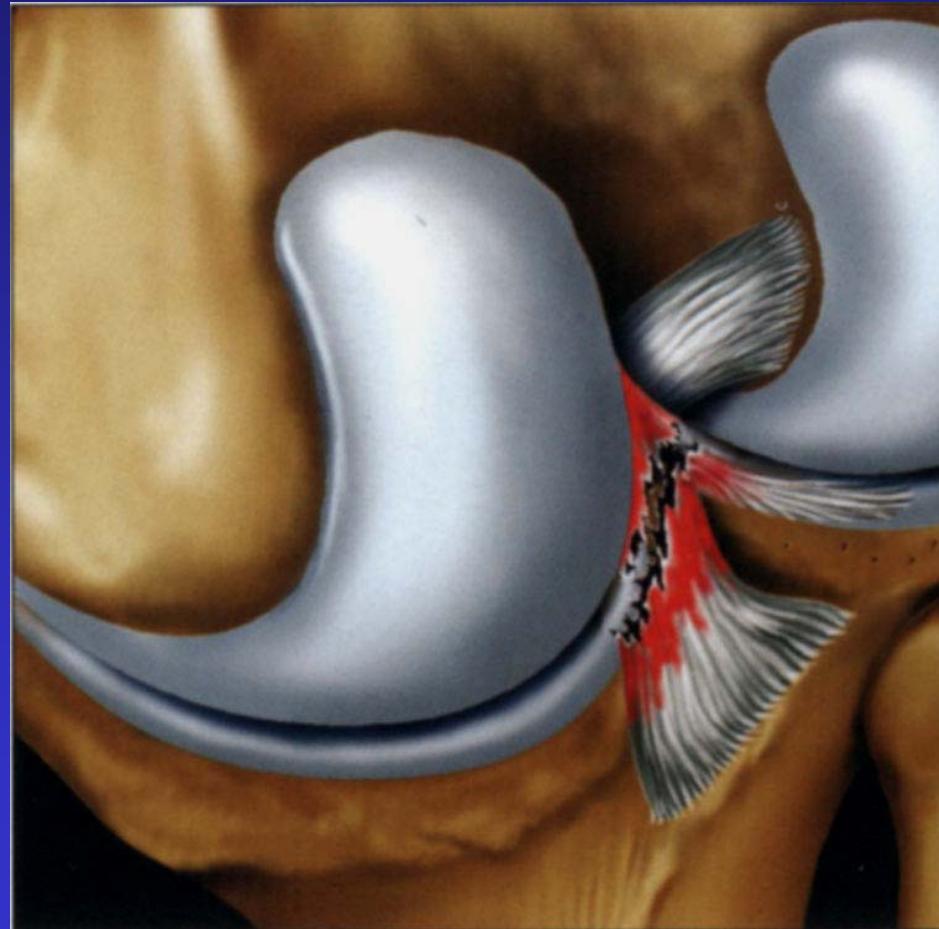
Impingement , Z.n.VKB



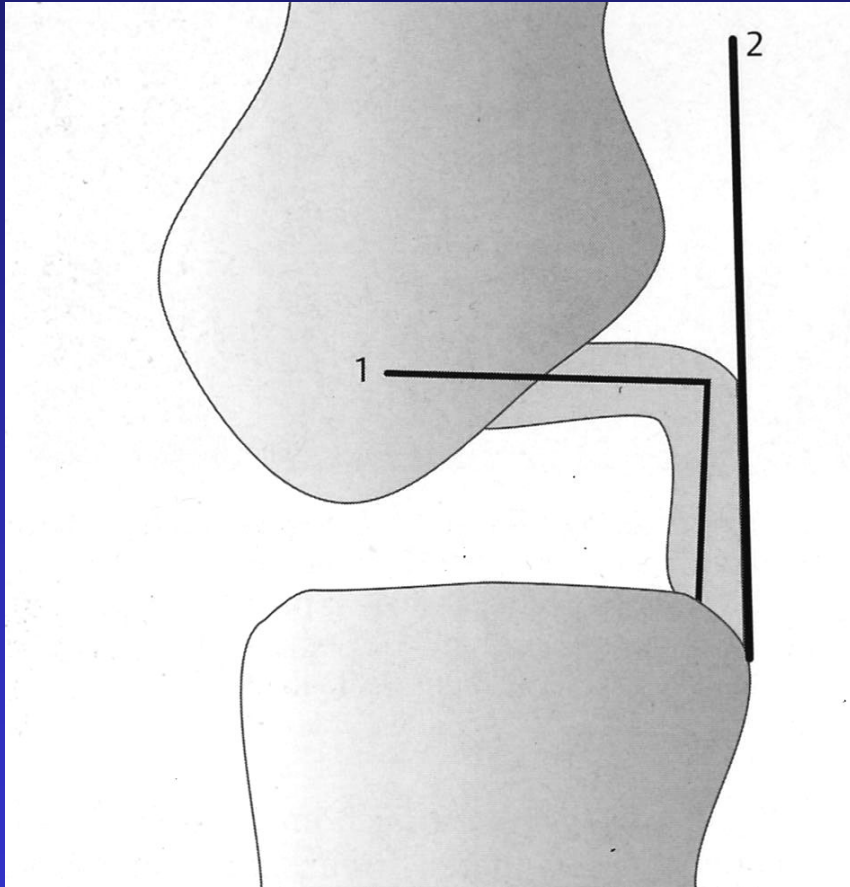
Z.n.VKB



HKB Ruptur

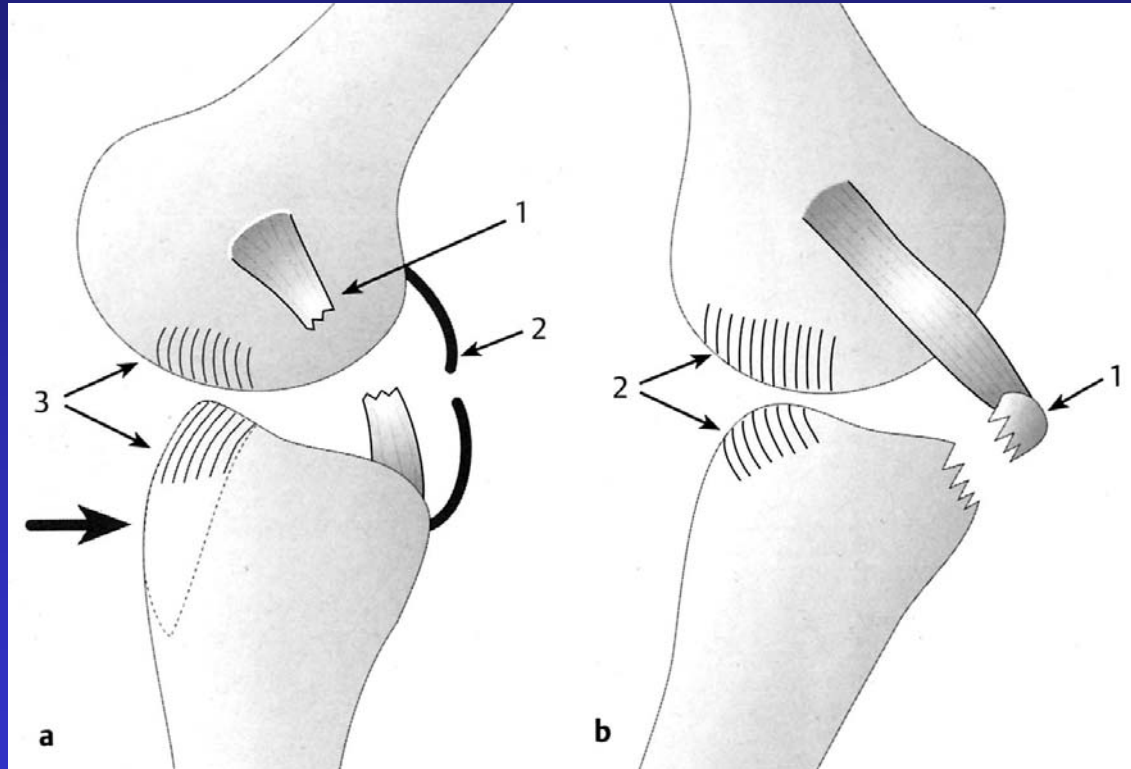


Hintere Kreuzbandruptur



- 1: Winkel normal 123°
2: hintere Kreuzbandlinie

Hintere Kreuzbandruptur

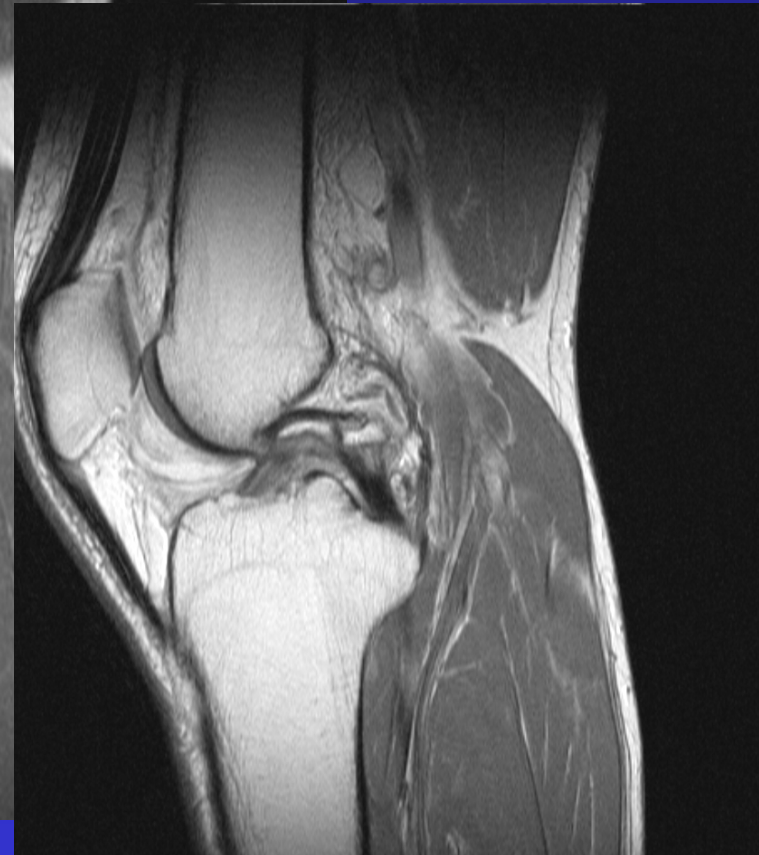
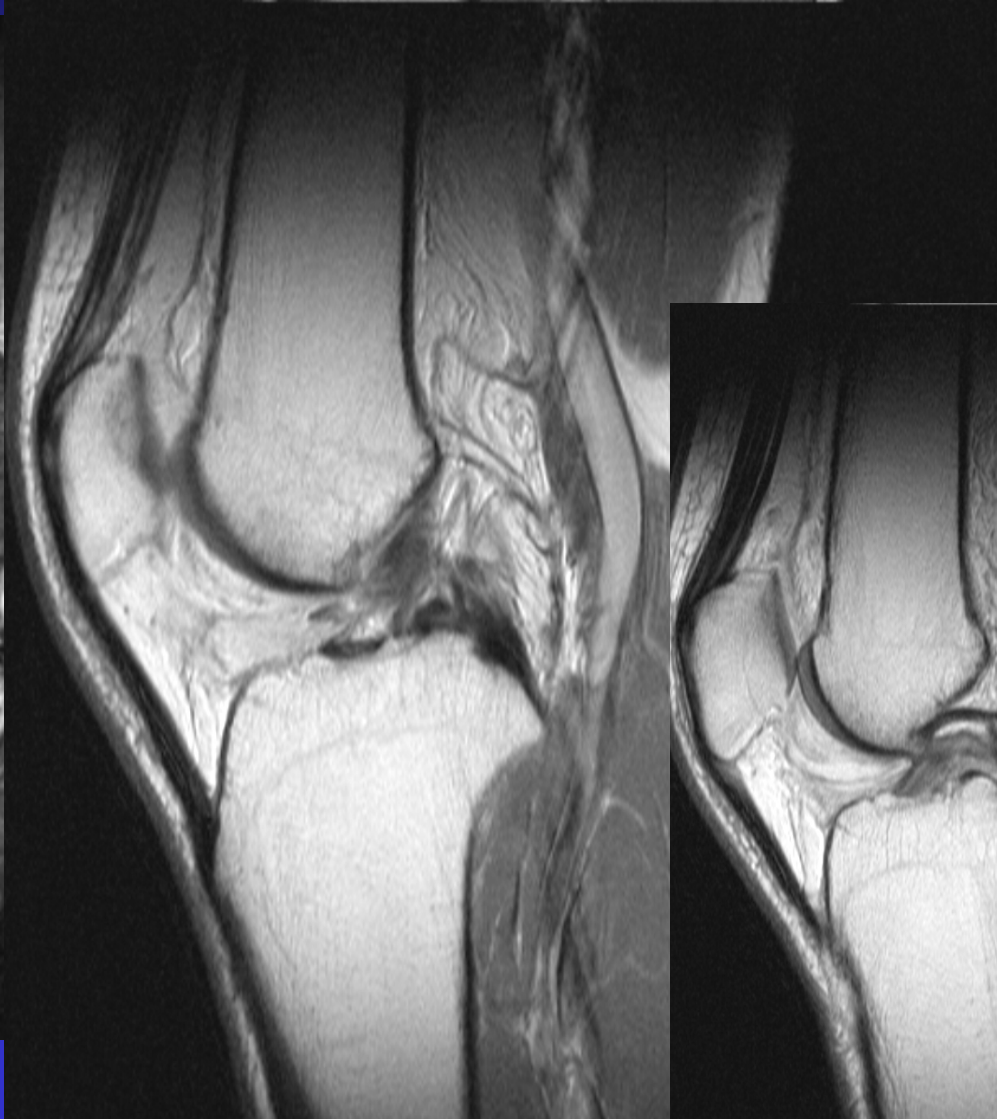
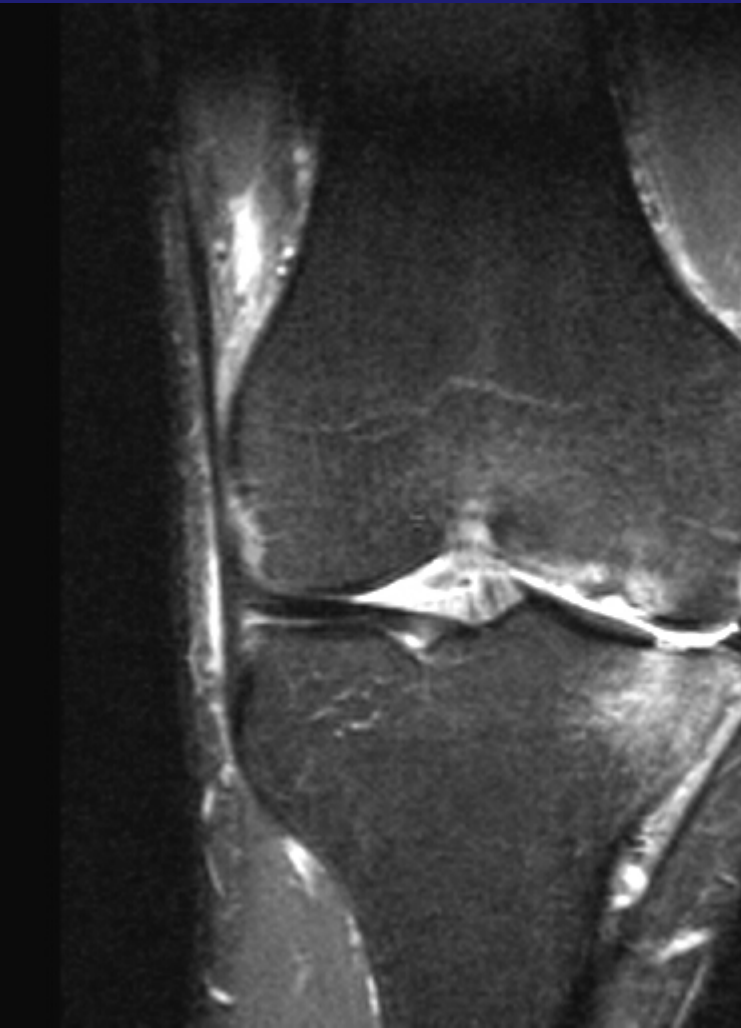


- 1. Hinteres Kreuzband
- 2. Gelenkkapsel
- 3. Bone bruise

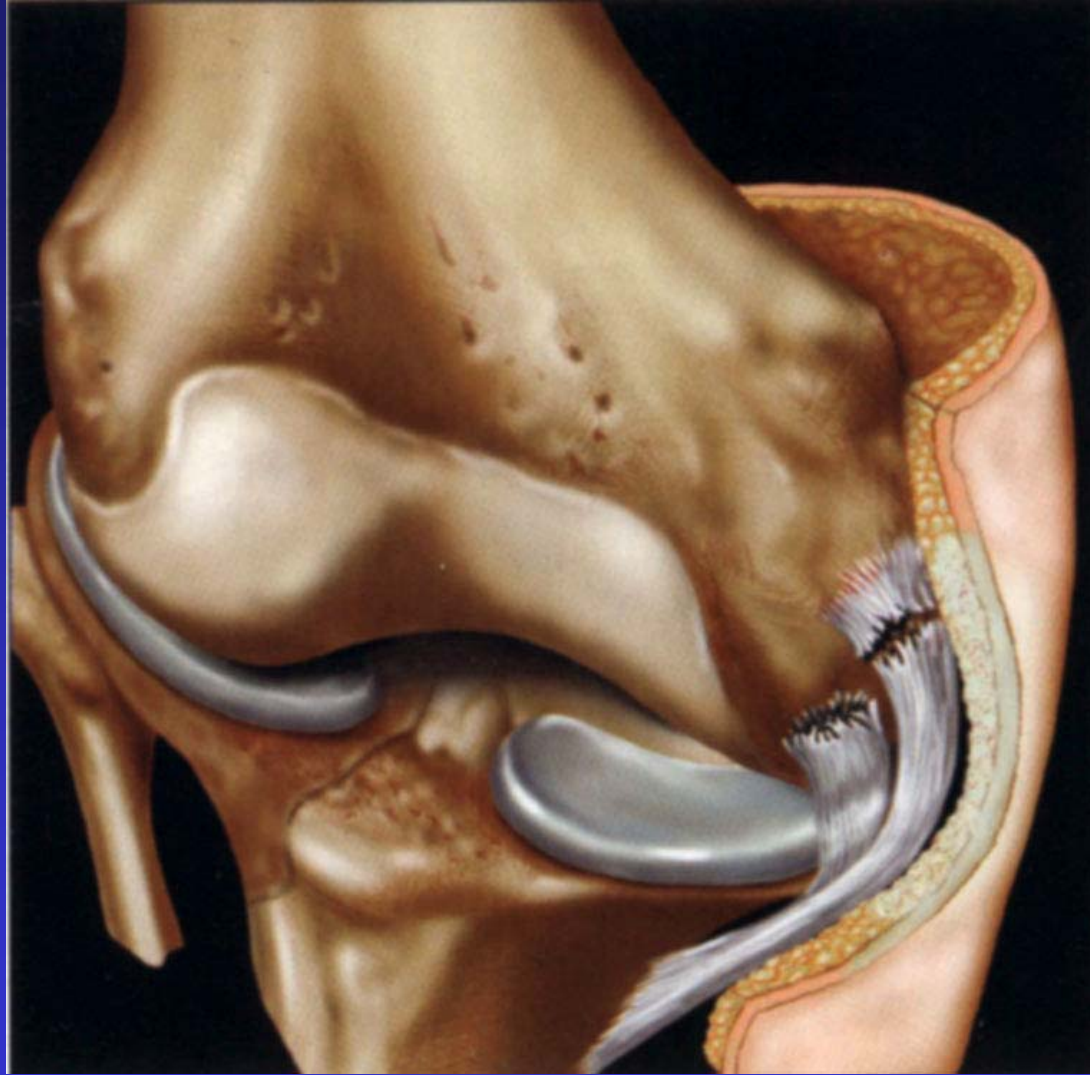
Z.n.VKB, Z.n.Partialrup HKB



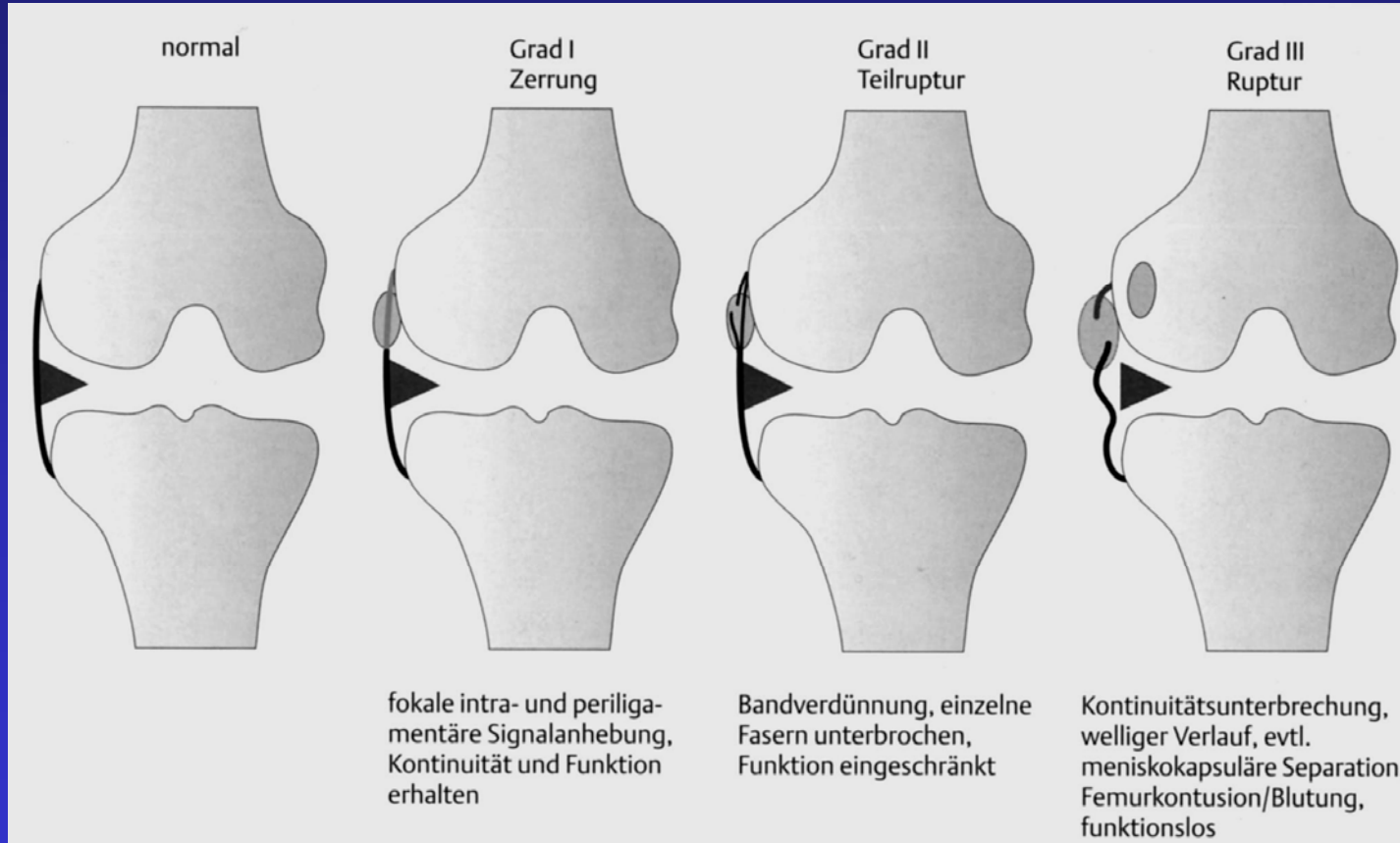
Z.n.VKB, PKB



MCL Ruptur



Klassifikation der Kollateralbandruptur



Teilruptur MCL



MCL Teiltrupt



Z.n.VKB



LCL, MCL, VKB



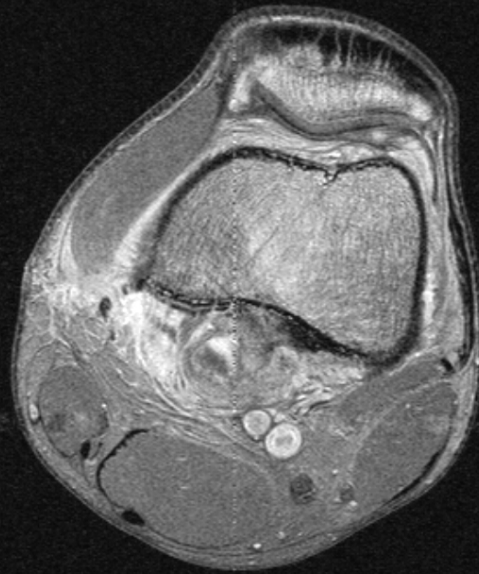
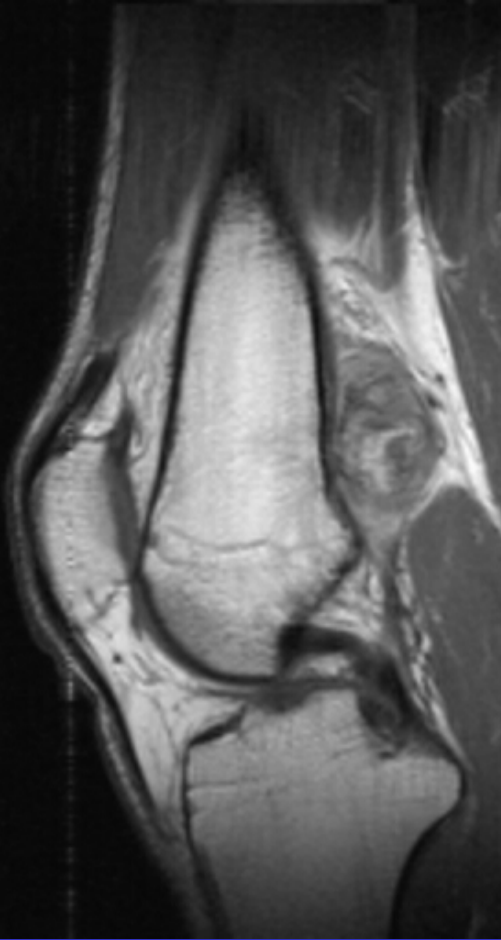
MCL



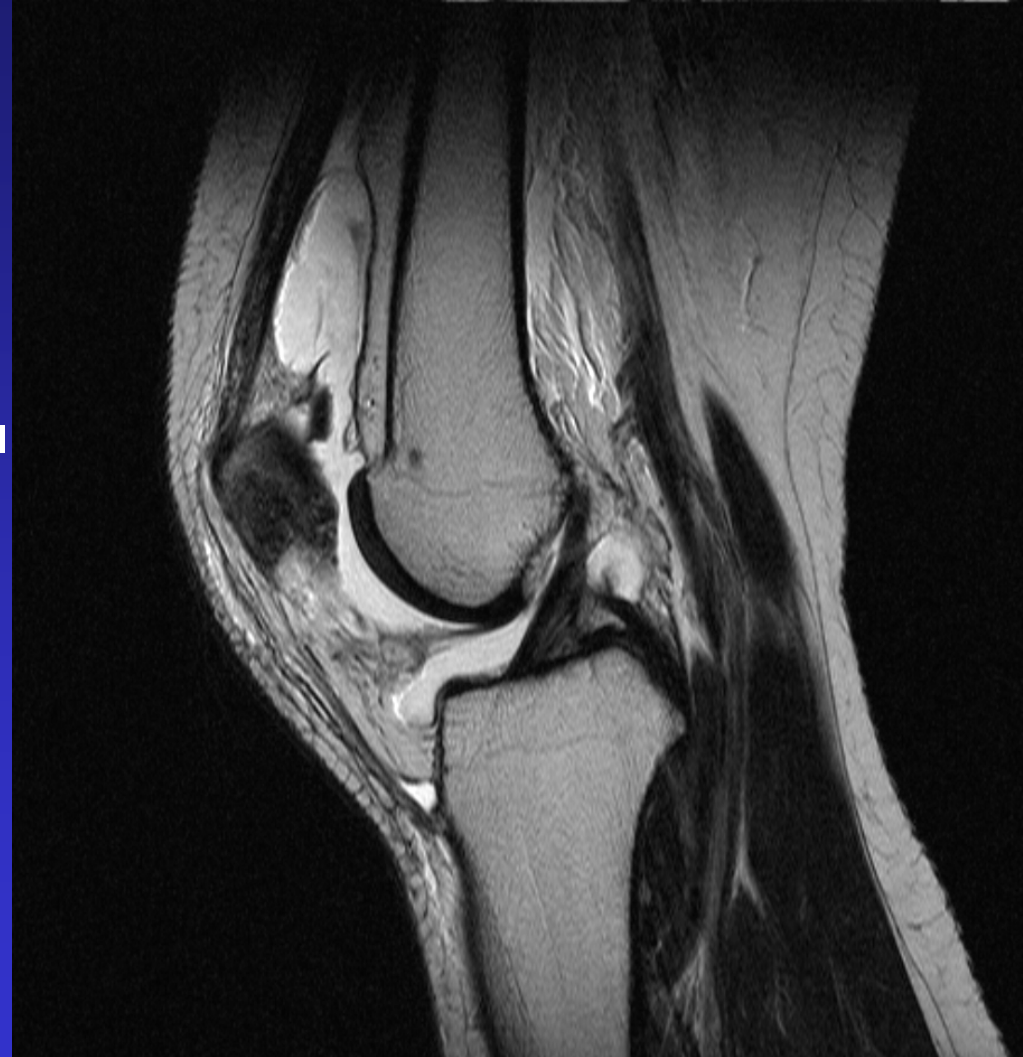
Stieda Pellegrini Zeichen



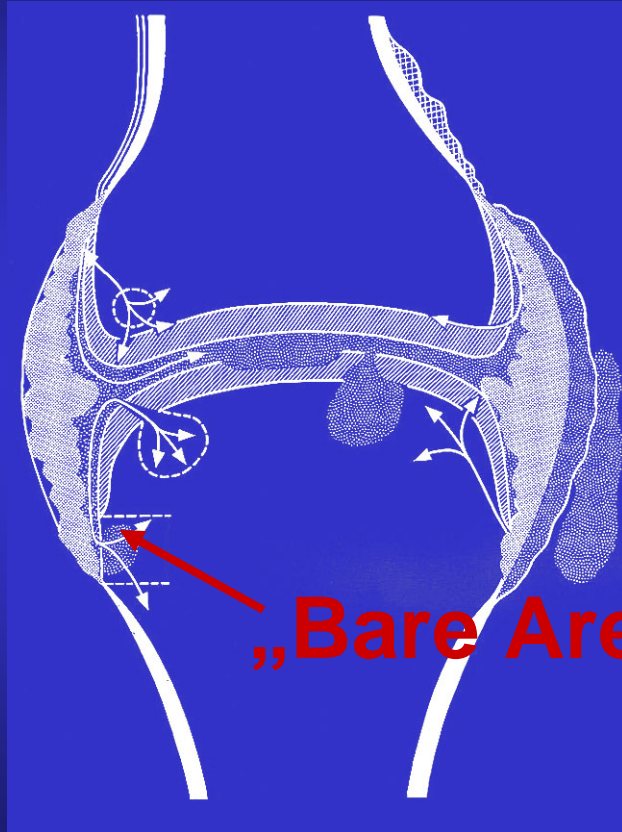
OS



Zerrung med. Retinaculum



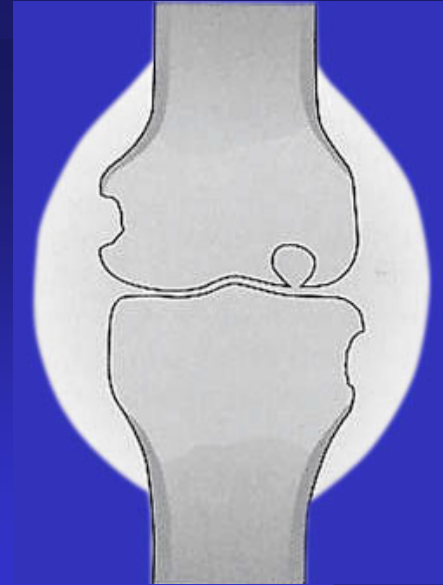
ARTHRITIS



- Synoviale Proliferation
- Gelenkerguß
- Erosionen

„Bare Areas“

ARTHRITIS



- Weichteilschwellung**
- symmetrische Gelenkspaltverschmälerung**
- Erosionen (marginal, zentral)**

SEKUNDÄRE DEGENERATION

- nach langer PCP
- Überlagerung der Zeichen
- geringe Sklerose
- kleine Osteophyten

DIFFERENTIALDIAGNOSE

-Septische Arthritis (bakteriell, TB, fungal, viral)

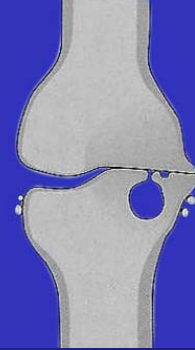
-Hämarthros

-Kristallarthropathien

DIFFERENTIALDIAGNOSE DER MONARTHROSIS

- Aktivierte Arthrose**
- Traumatische Arthritis (overuse)**
- Kollagenosen**
- PVNS**

AKTIVIERTE ARTHROSE



Femuropatellararthrose



Synovialitis

RA, 57 a

