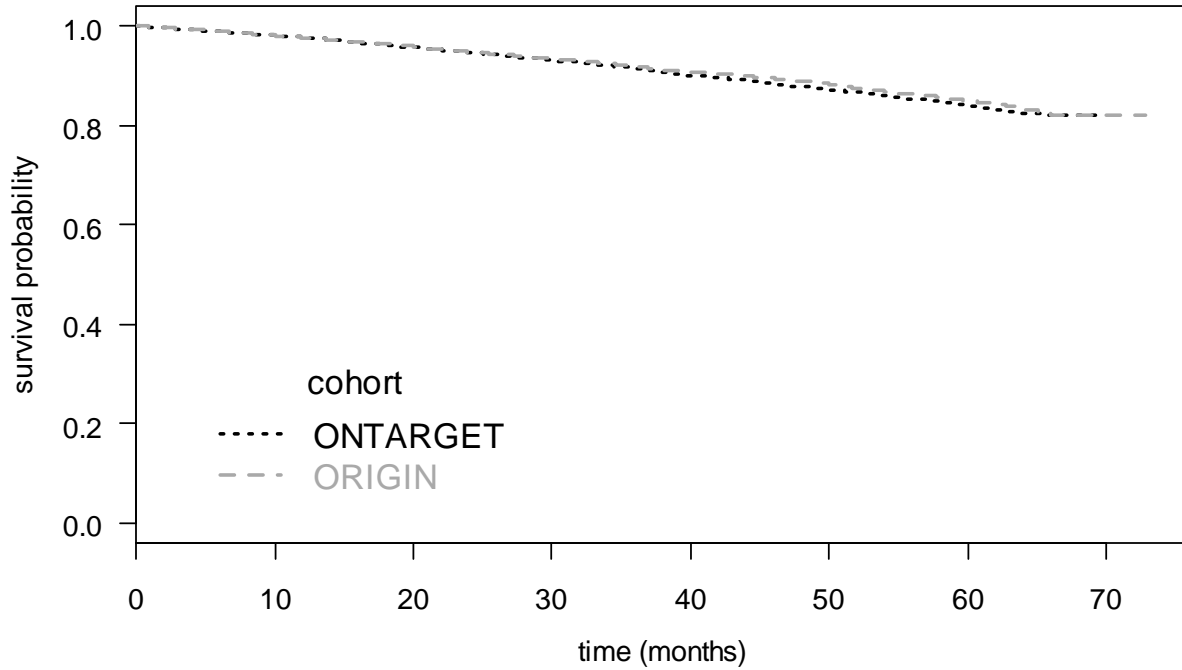


Supplemental Figure 1. Kaplan-Meier Plot Comparing Follow-Up of ONTARGET and ORIGIN



Validation cohort: To receive a similar follow-up as in ONTARGET, the 2-year visit was used as baseline in the validation. In ORIGIN almost all necessary variables were determined at the 2-year visit, with the exception of diabetes and peripheral artery disease. Therefore, the status at baseline was used for these two variables.