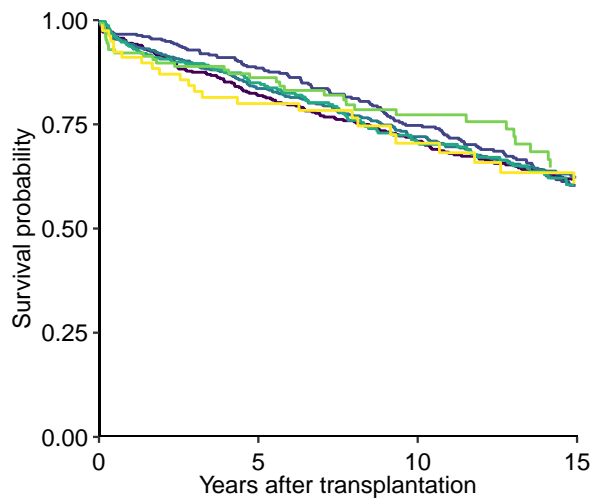
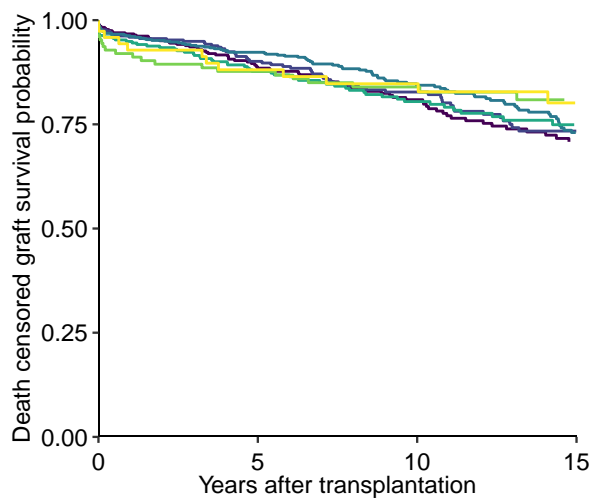


**a**

Transplant period (years after first graft loss)

0 - 1	415	298	223	160
>1 - 2	355	277	202	130
>2 - 4	589	400	277	166
>4 - 6	304	211	129	74
>6 - 8	127	92	57	34
>8	79	53	32	23

**b**

Transplant period (years after first graft loss)

0 - 1	415	241	152	87
>1 - 2	355	226	136	78
>2 - 4	589	407	233	130
>4 - 6	304	220	128	62
>6 - 8	127	99	69	37
>8	79	56	44	26