



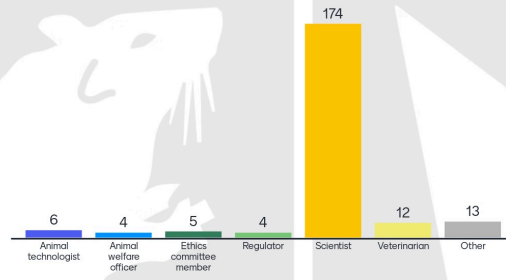
Instructions



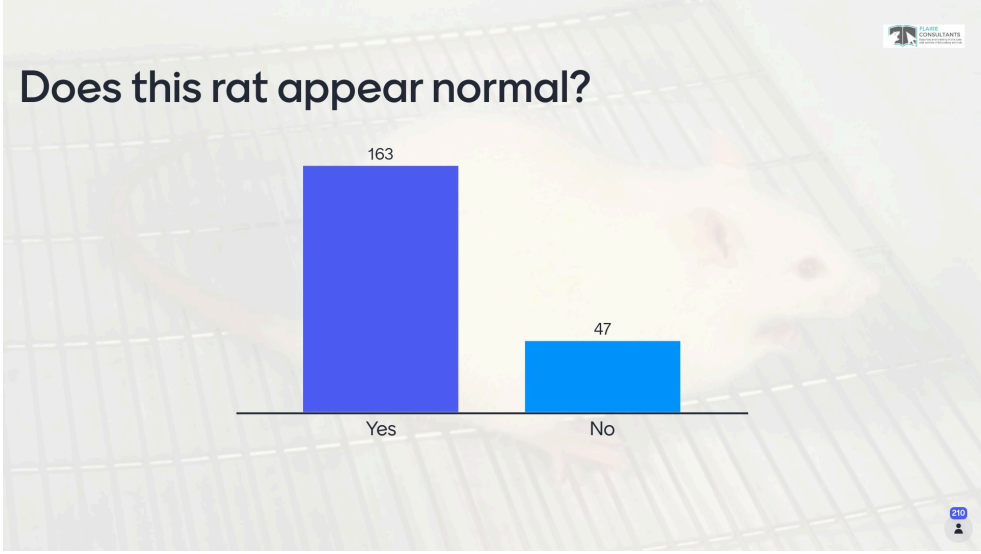
Which Institution do you work in?



What best describes your primary role in relation to animal use

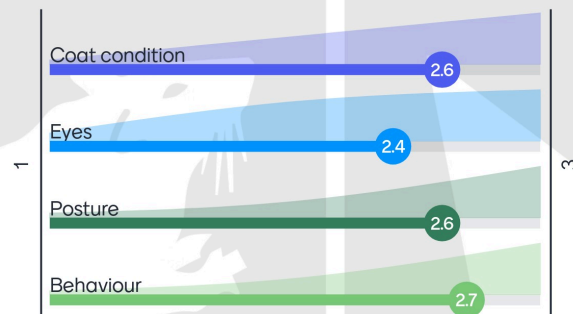


Keynote



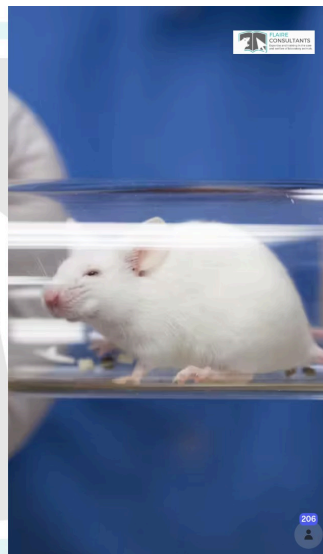
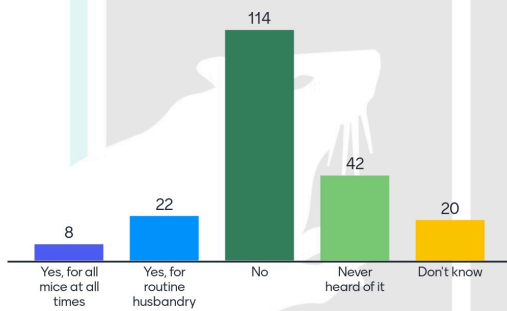
Score	1	2	3	
1	Coat-general	Normal	Slight lack of grooming	Starey
2	Eyes	Normal, open, slightly protruding	Part-closed or slightly sunken	Closed or sunken
3	Posture	Normal	Slightly abnormal	Very abnormal
4	Behaviour	Normal	Slightly dull or lethargic	Aggressive or apathetic and inactive

Score the mouse

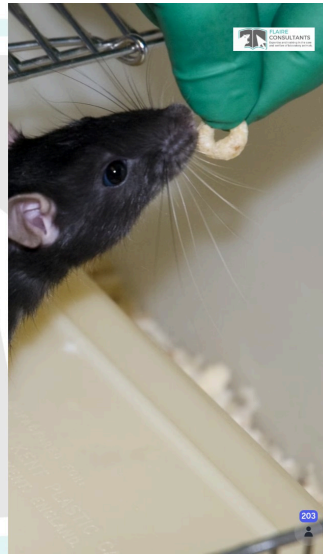
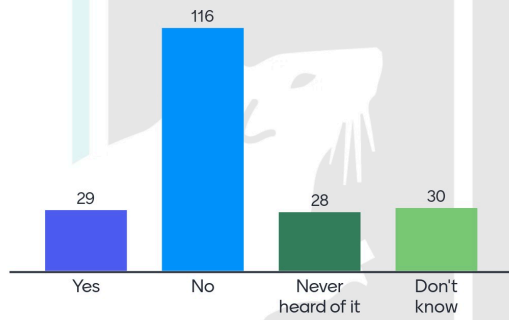




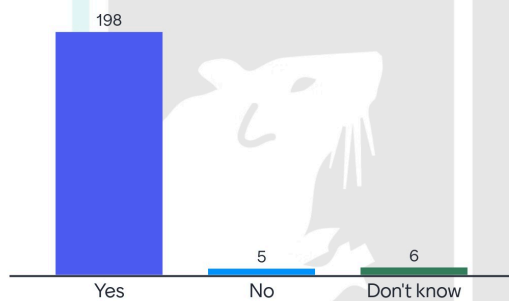
In my facility we have adopted tube or cupped hand handling of mice



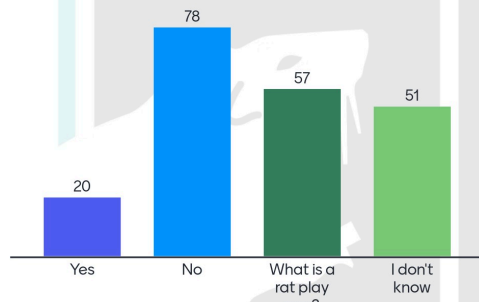
In my facility we are using positive reinforcement training for rats and mice



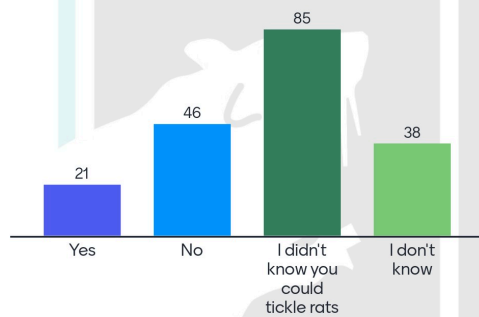
In my facility we provide environmental enrichment for rodents (> than 1 items /cage)

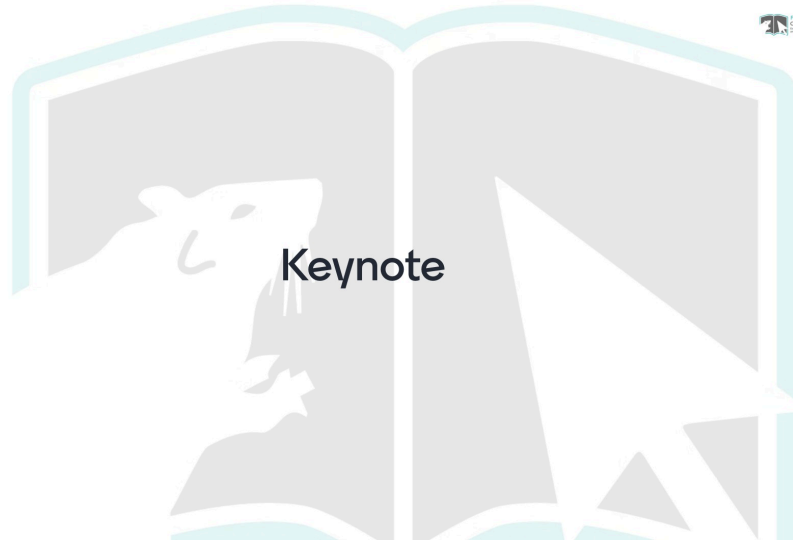


In my facility we have tried out/are using rat "play pens"



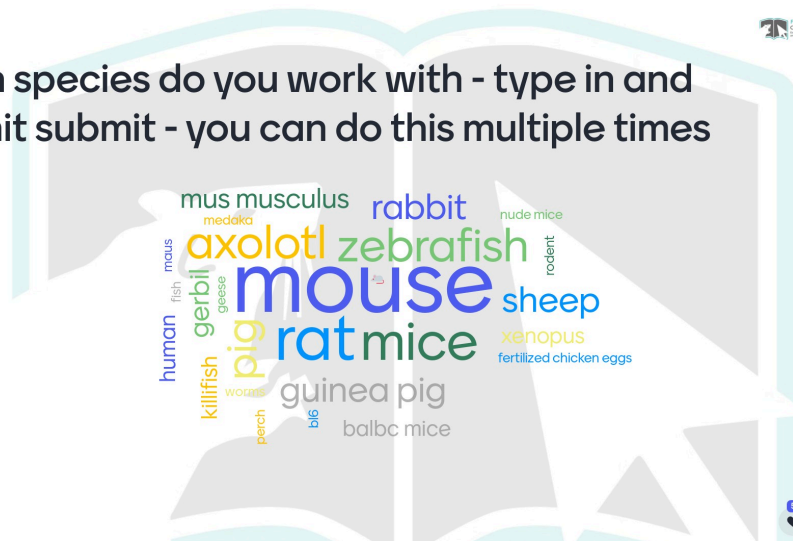
In my facility we have tried out tickling in rats





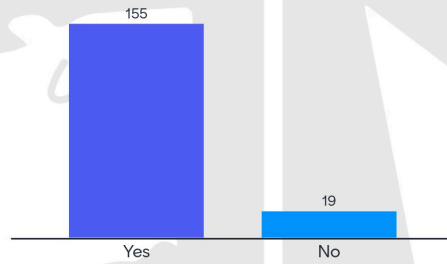
Keynote

Which species do you work with - type in and then hit submit - you can do this multiple times

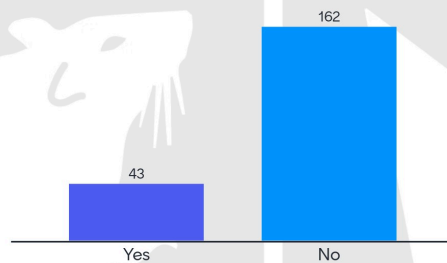


mus musculus rabbit nude mice
medaka axolotl zebrafish rodent
fish mouse gerbil geese mouse sheep
human gerbil pig rat mice xenopus
killifish worms guinea pig fertilized chicken eggs
perch balb mice

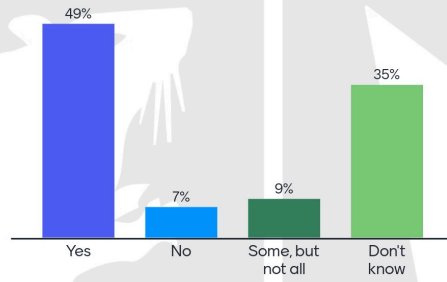
Do you have a set of standard dose rates for the analgesics you use?



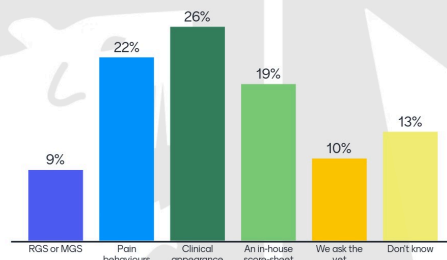
Do you give different doses of analgesics to male and female animals?



Do rodents in your facility have pain assessed following recovery from surgery (at least once)



What methods of pain assessment do you use? (choose all that are used)





Keynote

